

# Powerful Partnerships to Strengthen Family Engagement in Early Childhood

---

**EARLY CHILDHOOD INSTITUTE**

**November 7, 2024**

**10:45-12:15**



# Objectives



**Understand the purpose of community partnerships.**



**Identify potential community partners by their assets.**



**Learn strategies for developing relationships with community partners**

# Introductions



**Mary Beth Stevens**  
**NCFL**  
**Senior Training Specialist**



**Andrea Brown**  
**NCFL**  
**Director, Professional Learning**

# Parent Involvement -1993

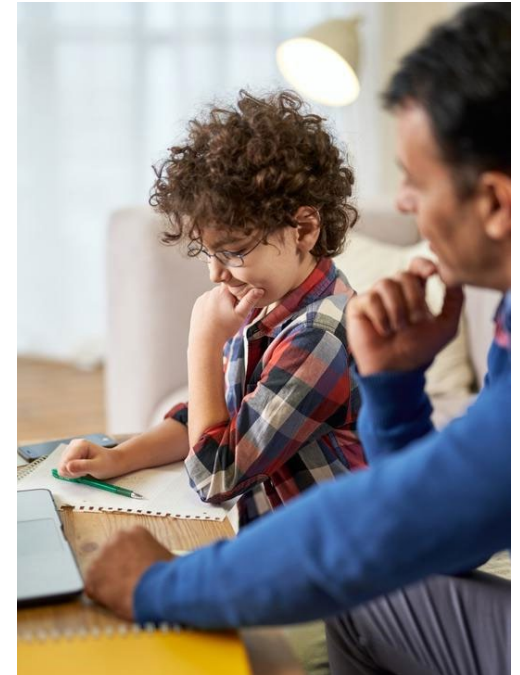
**Parent Involvement** is defined as any significant member of a child's family being actively involved in or visible in the child's schooling.

Reglin, G.L. (1993.) *At-Risk "parent and family" school involvement.*  
Charles C. Thomas Publishing.



# Family Engagement

Family engagement is a full, equal, and equitable partnership among families, educators, and community partners to promote children's learning from birth through college and career.



Connecticut State Department of Education, Full, Equal and Equitable Partnerships with Families (Hartford, CT: Connecticut State Department of Education, 2018), <https://portal.ct.gov/sde/publications/full-equal-and-equitable-partnerships-with-families/the-definition-a-clear-consensus>

**TEAM**  
**KENTUCKY**  
GOVERNOR'S OFFICE OF  
EARLY CHILDHOOD

# Community Builder

How do you seek input when planning for family engagement?

If you don't currently seek input, what are some ways you could?

**03:00**



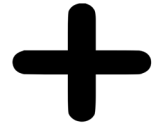
# Identifying Family Needs

- Understand what is important to each family
- Know what supports and activities are available for each family
- Partner with each family to strengthen connections to resources and other families

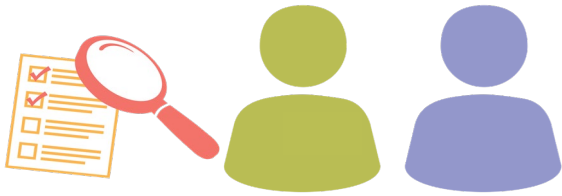


# Identifying Family Needs

Problem



**Deciding  
for families**



**PROBLEM**



**Partnering  
with families**



# Services Families May Need



# Services Your Families Need

03:00



According to the families in your program, what are some services that children and families in your community might currently need?

# How to Seek Information from Families

- Consider all touchpoints with families
  - pick up and drop off
  - family conferences
  - surveys
  - school events
  - newsletters

## Parenting Adult Survey

As we plan for Family Engagement, we would like to choose topics that would be interesting and helpful to you and your family. Please check the topics you would like to learn more about.

### Health

- Children's health care
- First aid and CPR
- Managing stress
- Diabetes
- Depression
- Health Services
- Immunizations
- Dental care
- Health and safety issues
- Exercise/physical fitness
- Alcohol or substance abuse
- Healthy lifestyles
- \_\_\_\_\_

### Nutrition

- Healthy snacks
- Cooking with children
- Cooking healthy
- Eating well on a tight budget
- \_\_\_\_\_

### Family Activities

- Outdoor fun
- Family games/activities to do at home
- Traditional games
- Holiday activities
- Traditional arts and crafts
- Television, movies and my family
- Internet use with children
- Monitoring and limiting screen time
- \_\_\_\_\_

### Family Relationships

- Child discipline
- Caring for my elders
- Being a step-parent
- Handling anger and frustrations
- \_\_\_\_\_

### Child Development and Learning

- Choosing books for my child
- Reading with children
- Talking with my child's teacher
- Helping my child with school work
- What to expect at different ages
- How children learn and grow
- Nursery rhymes & songs
- Child care
- Creating a literacy-rich home
- School involvement/engagement
- Getting ready for kindergarten
- School violence and bullying
- \_\_\_\_\_

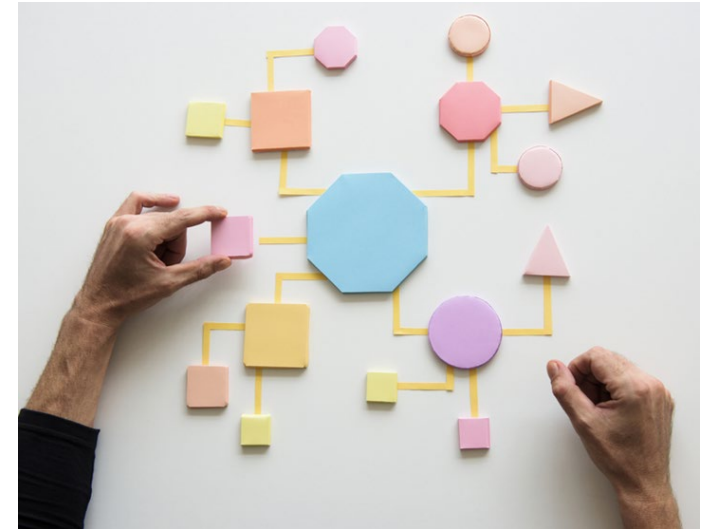
### Parent's Learning and Education

- Employment/work skills
- Time management
- How to advocate for my child
- Use of computers/Internet
- Budgeting
- Self-concept/how I feel about myself
- How to prepare for higher education
- Financial aid for higher education
- \_\_\_\_\_

# Systemic Approaches to Family Engagement

Systemic approaches to Family Engagement combine practices, strategies, services, and supports to address specific areas of FE.

- Implemented consistently across the school
- Differentiated to meet the individual needs of families



# Madison County

- Introductions
- History of the partnership
- Meeting the needs of families

# Building Partnerships

Key questions include:

- What partnerships are needed to meet the needs and goals of families?
- What resources are available in the community?

Community mapping is a tool your team can use collaboratively to help answer the key questions.

# Community Mapping

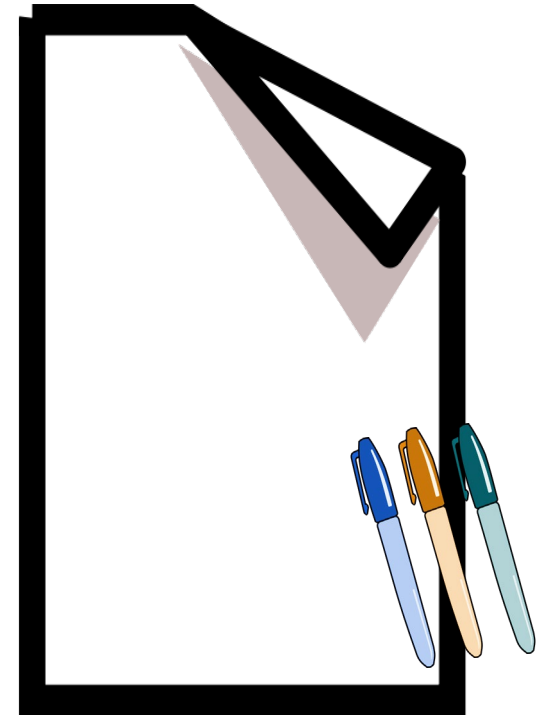
- Use the tool to identify resources, individuals, businesses, and organizations that can help with reaching and supporting families in your program.



# Community Mapping

In small groups, walk around the room and answer the following questions. Write your responses on the chart paper of each listed question:

- What are the resources and organizations in your community that currently support the families you serve?
- What additional resources or organizations are needed to meet the additional needs of the families you serve?





# Key Steps for Building Partnerships



Define the purpose of the partnership.



Assess the environment and the partnership's capacities.



Establish the partnership's goal and expected outcomes.



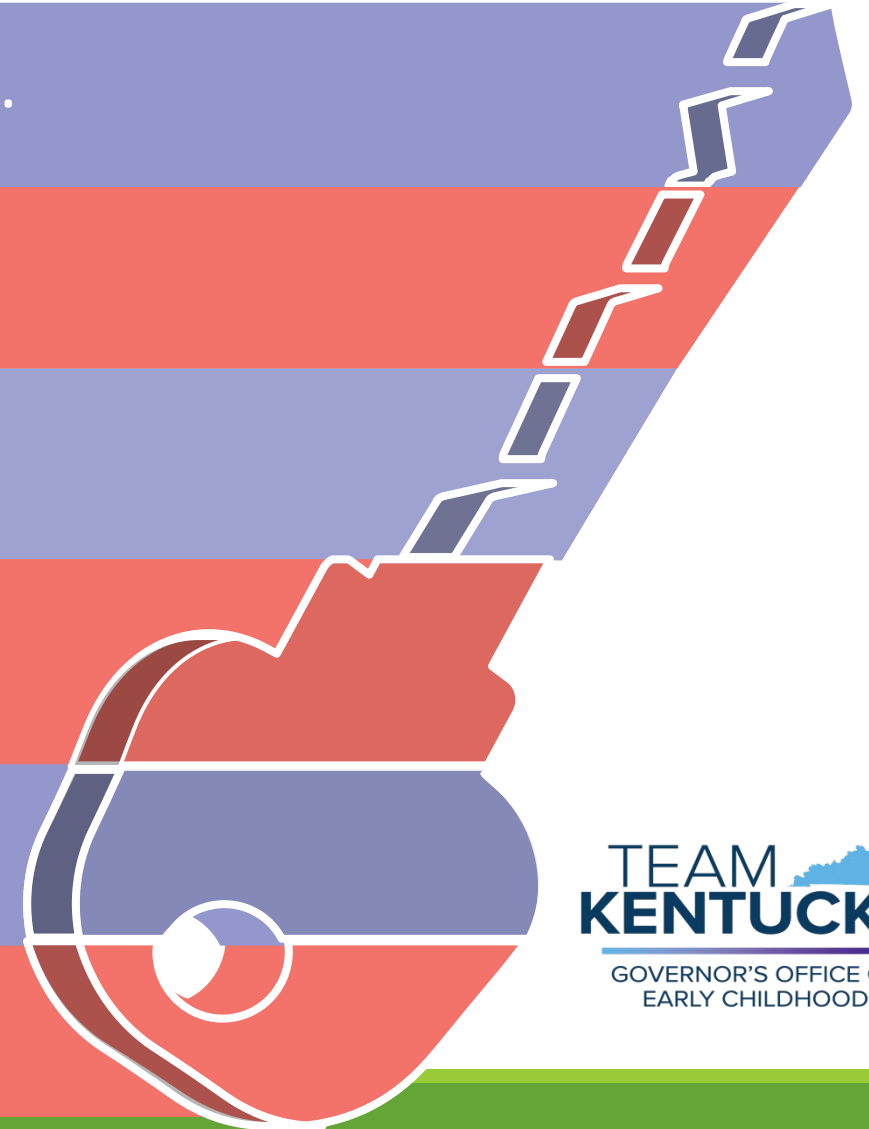
Explore and select strategies for supporting the partnership's work.



Develop a plan of action.



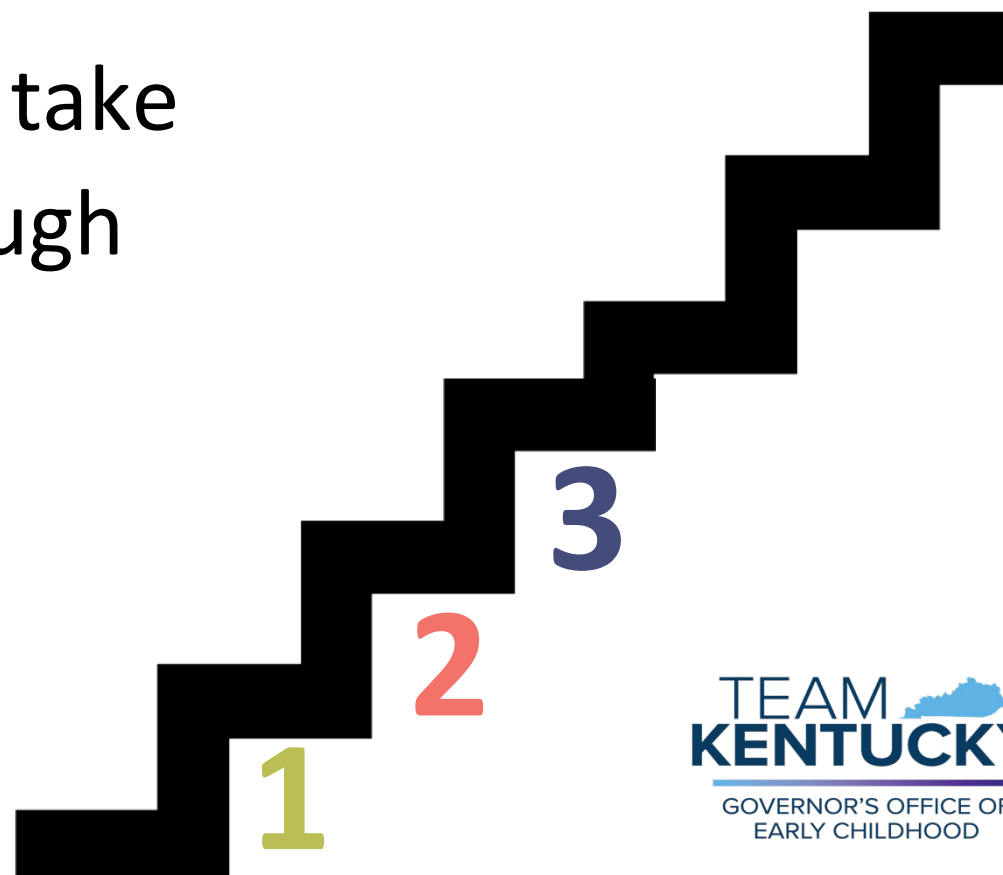
Consider opportunities for community impact.



# Next Steps

What are three action steps you will take to enhance family engagement through targeted community partnerships?

**03:00**



## Contact Information

---

Andrea Brown

National Center for Families Learning

[abrown@familieslearning.org](mailto:abrown@familieslearning.org)

Mary Beth Stevens

National Center for Families Learning

[mbstevens@familieslearning.org](mailto:mbstevens@familieslearning.org)